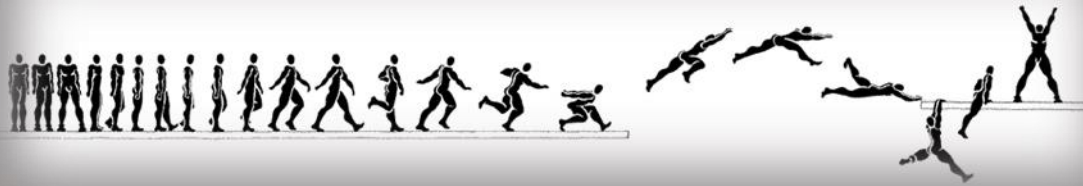




φύσις

Disability and Accessibility Plan 2016

Physis [fie-sis] a Greek word meaning the natural energy for growth, change and development.



Physis Heathgates Academy

Physis Quantum is a specialist provider of exciting and innovative services to Children and Young People in a variety of different settings.

Physis Heathgates Academy

(Part of The Physis Group)

aplant@physisgroup.co.uk

www.physisgroup.co.uk

Disability and Accessibility Plan 2016

Physis Heathgates Academy is set on two campuses so the following plan will separate the two, i.e. Heathgates and The Retreat.

Our initial review of access revealed:

Heathgates

The campus at Heathgates Farm has five classrooms, a staffroom and an office. There are three classrooms in a brick built part of the school, two further classrooms in one portable unit and an office and office in another portable unit. As the units stand approximately 30cm high from the floor the purchase of a ramp allowing wheelchair access was required and fitted, therefore allowing easy access. Main access to the other three classrooms is via the main entrance to the building although access is available to and from the back entrance via the fire door. The exterior grounds are floodlit at night to meet health and safety requirements, as is the driveway. Car parking has been reviewed both in order to improve space and disabled access. As a result the car park area has been resurfaced. There is also a concreted car parking area on the main driveway.

Within the school the floor is level throughout.

External lighting has been reviewed and the car parking area can be suitably lit.

All areas have sufficient fire safety equipment according to a recent assessment via Unicorn Fire and Safety.

The Retreat

The school campus at The Retreat has two units, the larger unit contains an office, open plan classroom, bathroom and kitchen area. The smaller unit is one classroom and a storage area. The former has a small step into the main building and due to the narrowness of the small hallway it would be difficult for wheelchair access. The larger doors which lead into the main classroom can be entered via a small step and a ramp has been built allowing wheelchair access. The latter has a slightly higher step into the classroom and a suitable ramp allows wheelchair access to this building.

Once entered, both buildings are level throughout making all areas accessible to wheelchairs.

The pathway to the school buildings was difficult to access for a wheelchair during periods of wet weather so a suitable pathway was added.

All areas have sufficient fire safety equipment according to a recent assessment via Unicorn Fire and Safety.

Buildings

General maintenance of the school buildings continues as an ongoing project to maintain a pleasant, relaxing and well-resourced environment. There has been recent changes to the monitoring of electrical or fire procedures. Unicorn Fire Safety carried out a full check of fire precautions and means of escape within the home and the school premises in 2015 and all recommendations have been actioned.

The school areas have been developed throughout the past year. Additional teaching resources and computers and printers in each classroom have been purchased throughout the year. These acquisitions and the stock are administered by the teaching staff.

Cars

The school has access to four company cars when transportation is required. These comply with all health and safety requirements and are regularly checked by staff and the youngsters.

Computer Systems and printers

As of May 2016, Physis now has an IT system which was installed by a reputable local company. All equipment is up to date and has various security and back up programmes installed, all are adequate for both the home and the school's needs.

A computer is available in each classroom along with a laptop in each home which can be used for homework when required.

Internet access is available under close staff supervision with the additional security of a filtration system which is always in operation. This can be over-ridden by a password when teachers feel this to be necessary.

All equipment is kept at an accessible height for all potential users.

All information is stored electronically in the Physis Cloud system. Hard copies can be made available as and when they are required.

It is also probable, given the fact that our pupils are exclusively looked-after children, that the corporate parents/placing authorities will be able to advise and assist in managing any communication issues with parents or significant adults. Our policy should remain to utilise such existing and familiar (to the parents) services wherever possible.

.....

This plan will be reviewed annually.

Written by Andy Plant (Head Teacher) on 30.04.16